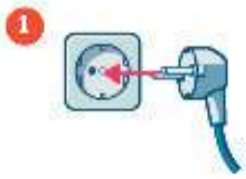


FIRST AID IN CASE OF MALFUNCTION MADE BLUE

COOLER IS NOT COOLING



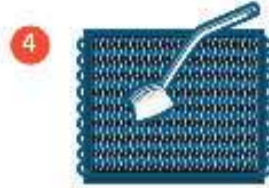
1 Check if the plug is in the socket.



2 Use a light or appliance that there is power to the outlet. If not check the fuse box.



3 Check that nothing is blocking the ventilation around the cooling unit. Remove any obstructions.



4 Are the ventilation grilles free of dust? Otherwise clean with a brush and vacuum cleaner.



5 Is the on / off switch or main switch of the cooler on?

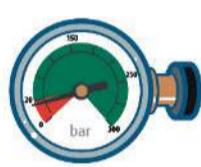


6 Is the thermostat of the cooler on and is it set between 4 and 6?

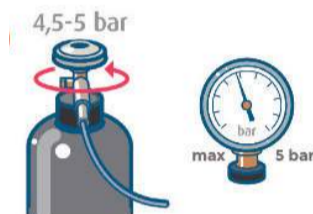
NO SPARKLING WATER



1 Turn off cooler, wait 10 seconds, and turn it on again.



2 Check the contents of the CO₂ cylinder. Pressure gauge in red? Replace cylinder.



3 Make sure the CO₂ cylinder is open and the pressure is 3.5 to 5 bar.



4 Check whether the ball valve of the carbon dioxide is open.

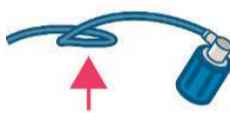


5 Check if the plug is in the socket.

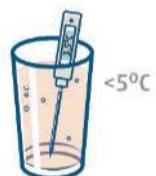


6 Use a light or appliance that there is power to the outlet. If not check the fuse box.

NO OR TOO LITTLE WATER



1 Check the water pipe for obstructions and / or kinks.



2 Check the water temperature $< 5^{\circ}\text{C}$.



3 Ensure that the water supply and / or water lock is open. (Instruction water lock on the back.)



4 Check water filter (valve) and water pressure incoming water > 2 bar.

SPARKLING FALLS DEAD IN BOTTLE



1 Check glasses for fatness.



2 Check that glasses are not too warm, rinse them well with cold water if necessary.

SPLASHING WATER FROM THE TAP



1 Turn off cooler, wait 5 seconds, and turn it on again. Wait ± 30 seconds before tapping again.



2 If this occurs regularly, the capacity of the water cooler may be too limited. In that case, contact us for consultation.

Please first review this troubleshooter before you report a malfunction to us. Usually **90%** of the cases can be resolved.


watermadeblue
madeblue.org

STILL NOT WORKING? CALL:
085 - 489 7711

INSTALLATION

The water lock must be connected between the tap and the water cooler. To do this, the hose must be loosened from the tap, then the water lock must be mounted on the tap and then the hose on the underside of the water lock.

INSTALLATION SETTING

On the outlet side of the water lock the numbers 1 to 10 can be read (along the inner edge). Also on this side of the Water lock is a ring with two slots, in which a supplied key fits. By turning this key, you can make the arrow (P) on that ring point to one of the numbers. Each number corresponds to ± 4.5 liters of water; so if you use the key to put the arrow on number 4, for example, this means that a maximum of $4 \times 4.5 = 18$ liters of water will flow through the water lock.

If more than 18 liters flow through the water lock for some reason, the water lock will close automatically and the water flow will be stopped.

If, in normal use, your water cooler requires a maximum amount of water of, for example, 5 liters when rinsing filters or the like, then it is recommended to set the water trap to 9 liters; you must then turn the arrow with the key so that it is at number 2 ($2 \times 4.5 = 9$ liters).

ADVISED FLOW QUANTITY

A water cooler normally uses relatively small amounts of water. That is why about 9 liters of water are generally sufficient as a set point for the water lock.

MAINTENANCE

The strainer that is placed at the top in the Water lock only needs to be rinsed clean occasionally (for example, once a year).

As soon as a technical defect or hose breakage occurs at the water cooler, as a result of which the water can flow through indefinitely and as a result can cause a huge flooding, the water lock will automatically stop the water supply.

MOUNTING

Make sure that before you screw the water lock on the tap, you have placed the supplied strainer with rubber ring (E) in the water lock. Of course, before you attach the water Lock to the tap, you have placed the aforementioned arrow (P) on the correct number.

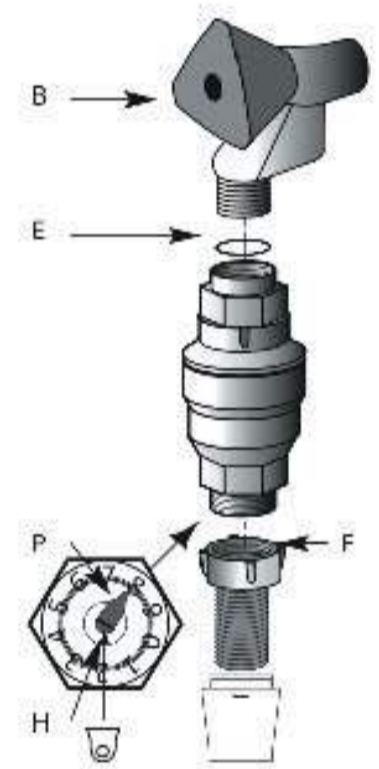
It is usually sufficient if you tighten the water lock securely by hand on the tap. If there is any leakage between the tap and the installed water Lock when opening the tap, you can use pliers very carefully.

On the other side of the water lock you can turn the hose on the bottom of the water lock using the screw connection. However, do not forget to first place the rubber gasket ring (F) in the hose connection.

RESETTING

If it should happen that your water cooler has had a defect or leak, where the water could flow through, or in the event that the water cooler has tapped more than the set point, the water Lock will have automatically shut off the water supply to the water cooler. After this the following should be done:

1. Turn off the tap;
2. Have the defect repaired if necessary.
3. Loosen hose from bottom of the lock;
4. Unscrew the water lock from the tap;
5. Press the red pin (H) on the bottom;
6. Reattach the water lock to the tap according to the installation instructions.



TECHNICAL DATA

Flow	4.5 to 45 l adjustable
Height	9 cm
Largest diameter	5 cm
Installation length	7.5 cm